

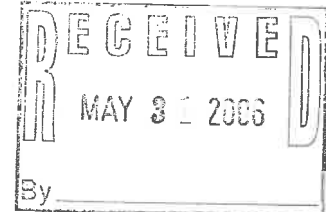


CKS ENGINEERS, INC.

25th
ANNIVERSARY
1981 2006

David W. Connell, P.E.
Joseph J. Nolan, P.E.
Thomas F. Zarko, P.E.
James F. Weiss
Patrick P. DiGangi, P.E.
Ruth Cunnane

May 30, 2006
Ref: #7383



Woodrow & Associates, Inc.
Spring House Corporate Center
Suite 100
323 Norristown Road
Ambler, PA 19002

Attention: Timothy P. Woodrow, P.E.

Reference: Worcester Township - MJE Builders - Hollow Road Subdivision

Dear Tim:

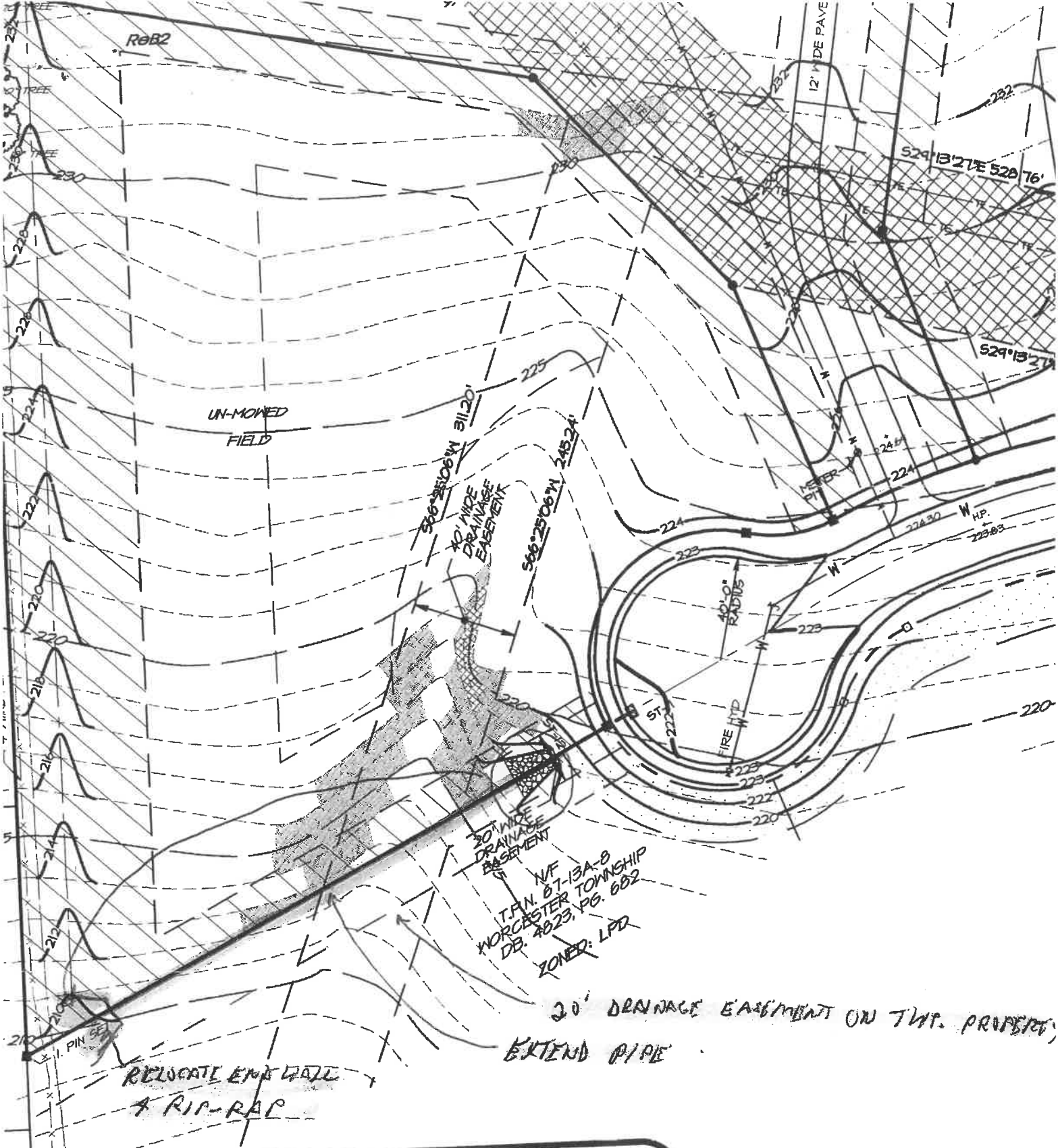
CKS Engineers, Inc. is working on the subdivision of Township property along Meadow Lane off of Hollow Road. As part of our work, we are attempting to coordinate the stormwater plans for the Mike Evans parcel and the Zaveta parcel. We did identify one area related to your plan which needs to be revised. Attached to this letter please find a copy of a portion of your plan sheet showing the storm piping to be installed at the cul-de-sac of Meadow Lane as part of your subdivision. I am requesting a revision to that piping design. Please extend the storm pipe from its current point to the swale that will be constructed along the rear property line of Lot 4. In addition, relocate the end wall and rip-rap configuration to the end of the extended piping. The Township will be providing a 20-ft. drainage easement on their property, which will encompass a portion of this stormwater piping arrangement. It is my understanding that the 40-ft. wide drainage easement through Lot 4 is contemplated to be abandoned as part of your subdivision. Likewise, the Township will also be abandoning that part of the drainage easement which crosses through their property. The drainage easement will be relocated along the east property boundary within the 30-ft. drainage easement, which will connect to the easement provided through your Lot 4. If you have any questions or if any of this is unclear, please feel free to contact me directly. You can either make this revision now as part of the preliminary plan submission or this revision can wait until submission of final plans.

Very truly yours,
CKS ENGINEERS, INC.
Township Engineers


Joseph J. Nolan, P.E.

JJN/mdm
Enclosure

cc: ✓ Eunice Kriebel, Acting Township Manager (w/encl.)
File (w/encl.)



PLAN LEGE