

Worcester Comprehensive Plan: 2021 Update



What is a Comprehensive Plan?

- A plan for the future of a community
- Factors in all issues and interests that communities have
- Helps to identify how different aspects of a community are interconnected
- Finds areas where action can take place to maximize the benefit to various aspects of the community

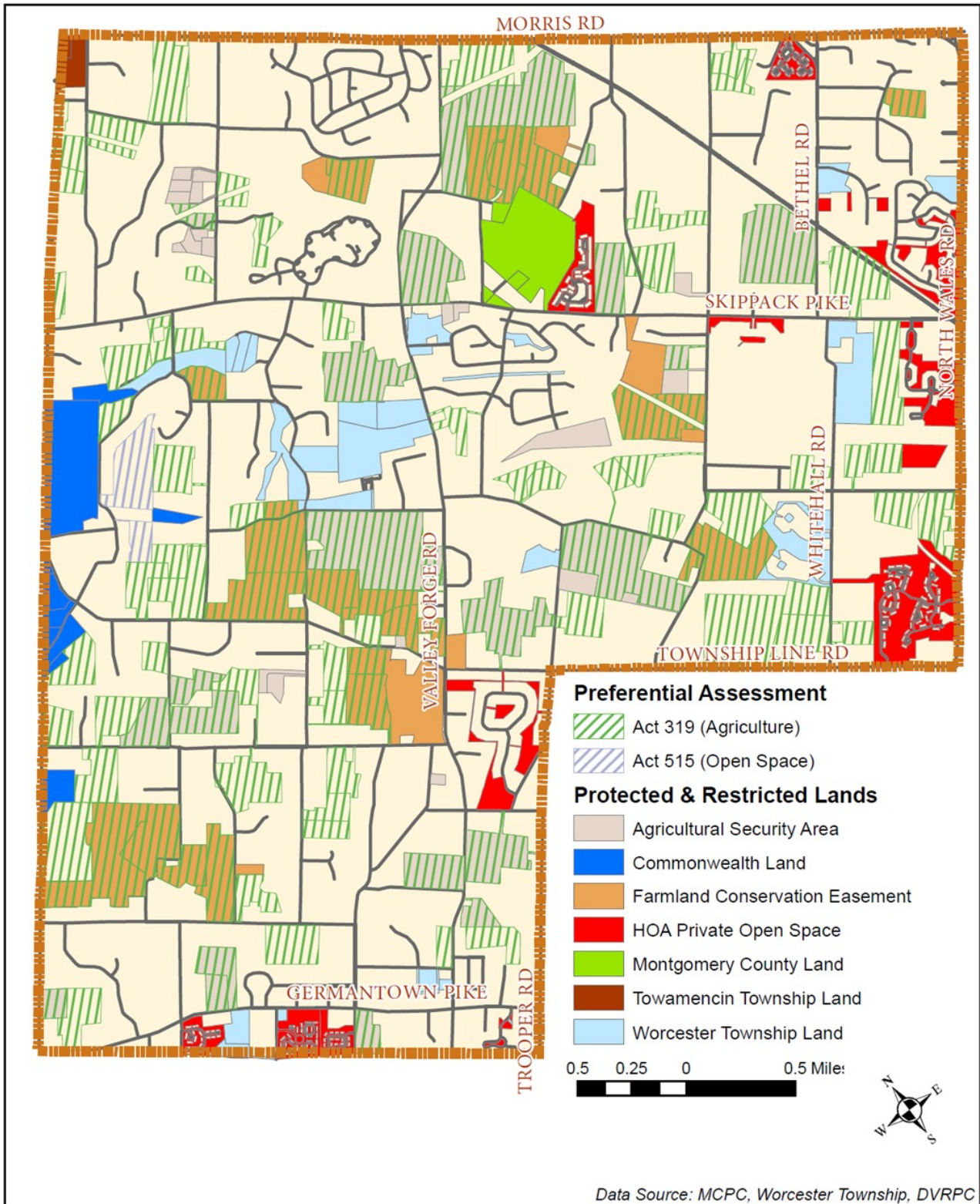
Who is involved in making this plan?

- The plan reflects the needs of those who live and work in the community and have a stake in its future.
- The key groups that are create this plan include:
 - ⇒ Comprehensive Plan Update Task Force
 - Residents from a variety of backgrounds are responsible for establishing community goals, reviewing research, and engaging others within the community for feedback
 - ⇒ Township Staff and Consultants
 - Provide background data, information about ongoing projects within the Township, and assist with community engagement
 - ⇒ Montgomery County Planning Commission (MCPC)
 - Coordinate all aspects of plan development with Township staff and provided advice for the best planning practices to follow
 - ⇒ The Public
 - Community members provide their feedback on which priorities and projects this plan should address
 - ⇒ Board of Supervisors
 - The elected body of the Township that approves the plan and makes it official Township policy



Methacton High School

Preserved Open Space

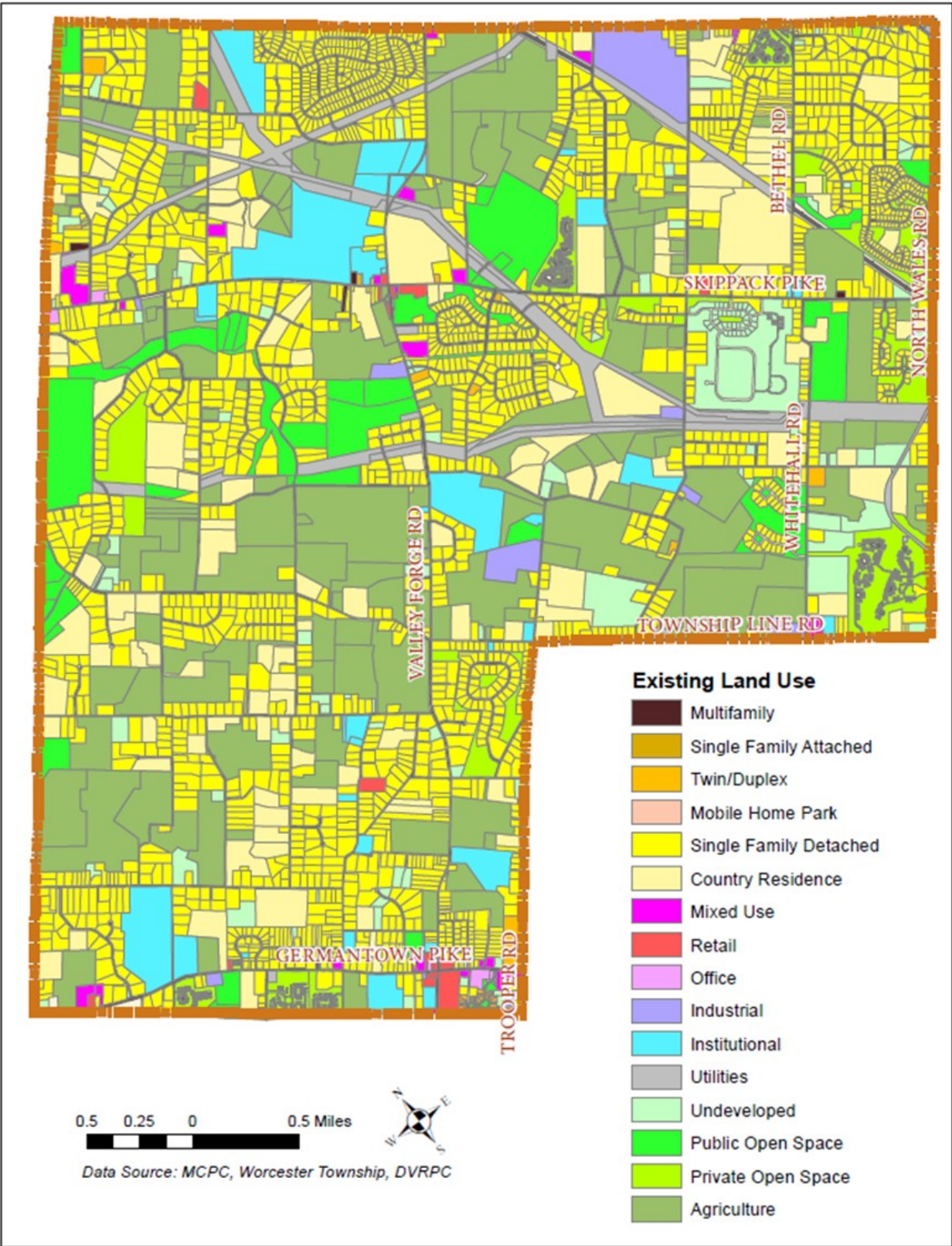


- Colored areas represent land that is temporarily or permanently protected from future development



Willow Creek Farm

Existing Land Use



- Worcester is primarily home to single family detached homes and agriculture
- Land use assessments allow for a way to determine what land is still available for development in the future

What we've done to date since we began update in July 2020:

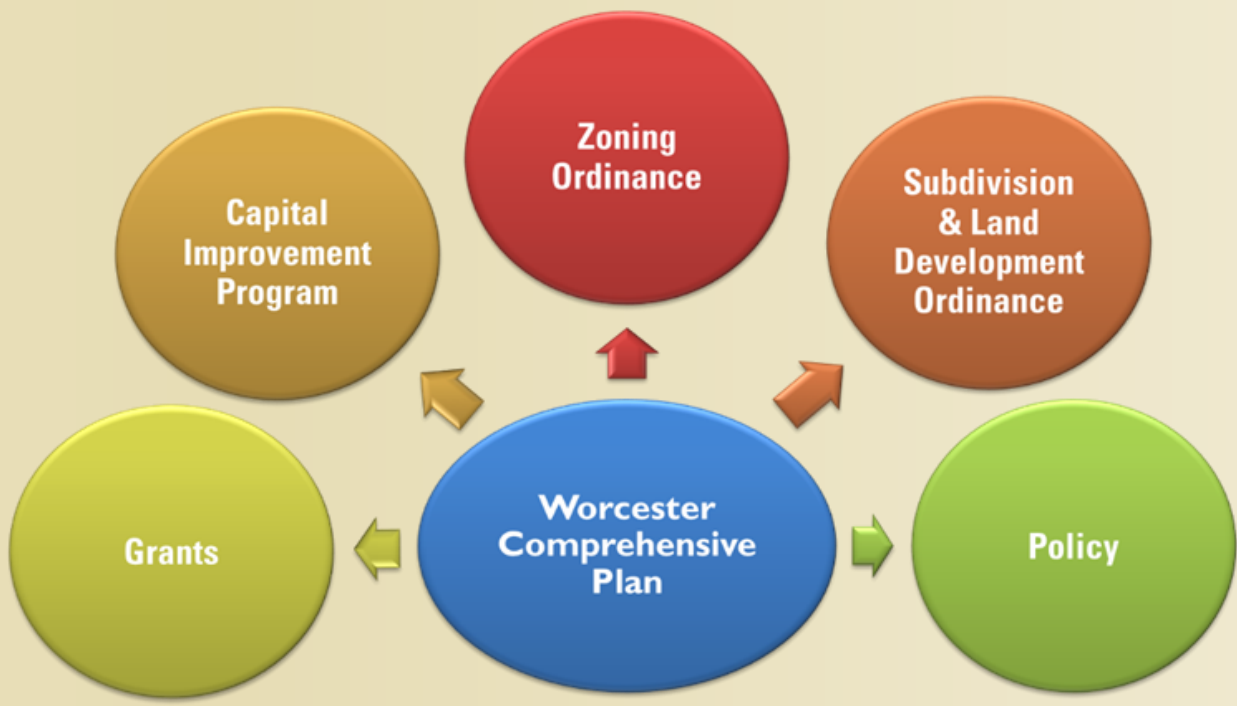
- Administered a resident public outreach survey, receiving almost 600 responses
- Researched and reviewed the existing conditions on many different topics and demographics in the Township with CPU Task Force
- Held a virtual public meeting in March 2021
- Produced an interactive StoryMap describing the conditions of Worcester Today, available on Township website
- Began work establishing priority goals and objectives for plan

What there is still left to do:

- Develop recommendations for improvement, including physical projects and policy changes
- Hold a public *in-person* Open House on potential goals and recommendations on **October 27, 2021**.
- Release draft for public review and comment on or about **January 2022**
- Hold public hearings on final plan draft
- Potentially adopt plan as early as **March 2022**

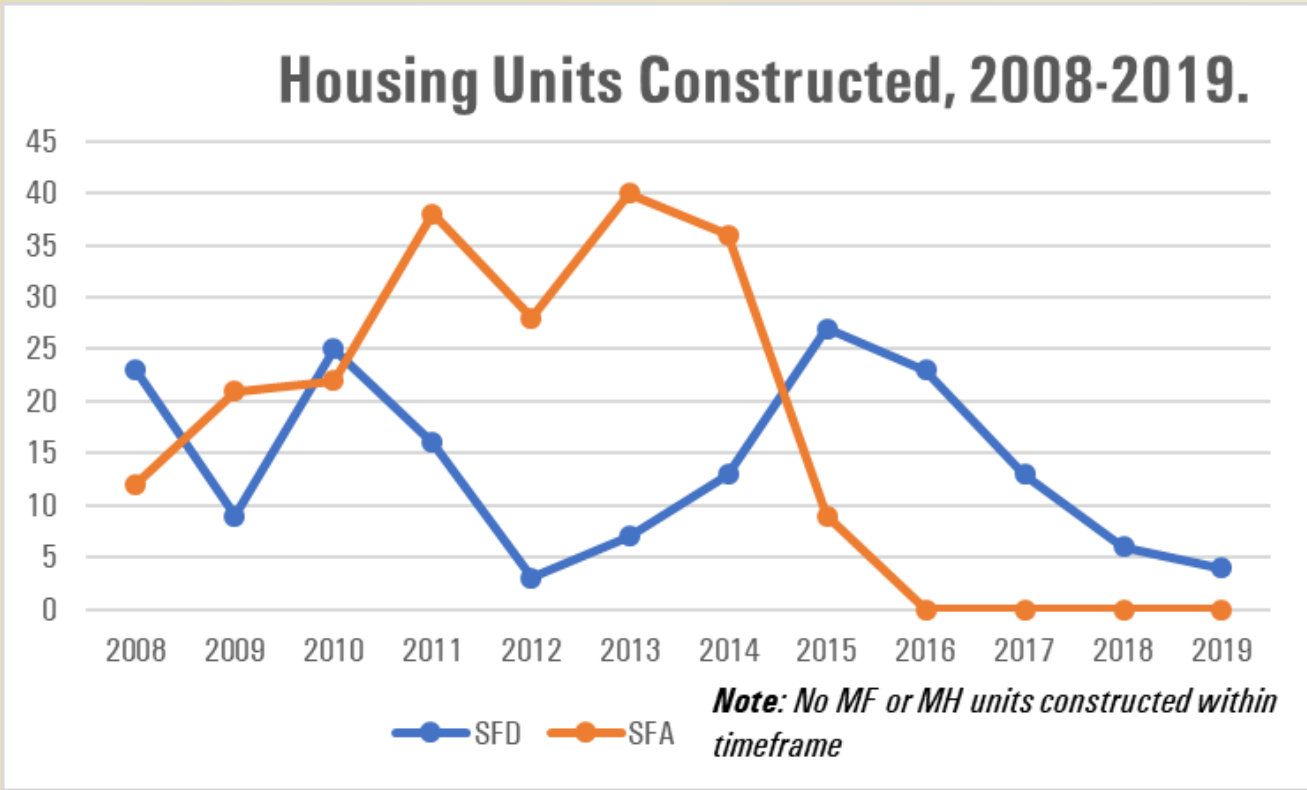
Why do we need a plan?

- Comprehensive plans are designed to be adaptable to the changing needs of the Township
- The most recent plan was published in 2008
- An update is necessary to reflect changes that have occurred over the past 13 years



Peter Wentz Farmstead

Housing Construction



- The number of housing units constructed has slightly decreased over the past few years



Merrymeade Farm

We are developing recommendations in the following subject areas:

- Growth Management
- Transportation
- Infrastructure
- Preservation, Open Space, and Parks
- Environment and Sustainability
- Economic Development
- Governance
- Housing