

WORCESTER



TOWNSHIP

At the Center Point

of Montgomery County

Essential Summer Grilling Safety Tips

As summer approaches, it's time to dust off the grill and enjoy outdoor cooking. However, safety should always be the top priority. Here are some concise fire safety tips to keep in mind:



- 1. Outdoor Use Only:** Keep the grill outside, at least 3 feet away from the house.
- 2. Safe Zone:** Maintain a 3-foot safety zone around the grill to prevent accidents.
- 3. Gas Grill Precautions:** Open the grill lid before lighting to prevent gas buildup.
- 4. Stay Vigilant:** Never leave a lit grill, fire pit, or torch unattended.
- 5. Regular Cleaning:** Clean the grill after each use to prevent grease fires.
- 6. Proper Disposal:** Dispose of cooled coals in a metal can with a lid.

Following these tips ensures a safe and enjoyable grilling experience for everyone. Enjoy your summer cookouts responsibly!



SUMMER FARM STAND

Tuesdays, 10 am – 12 pm

June 18, 25

July 2, 9, 16, 23, 30

on Variety's property

2950 Potshop Road

Worcester, PA

Veggies, herbs, flowers, handmade items made and harvested by our vocational training programs for young adults with disabilities.

Look for the Farm Cart when you pull onto our campus! You can't miss it!



WORCESTER WELCOMES NEW FIRE POLICE OFFICERS



Over the past quarter, the Worcester Volunteer Fire Department has proudly welcomed two new fire police officers to its ranks. We are excited to introduce Fire Police Officer Steve Madsen and Fire Police Officer Kendra Nicole Stenack. Their dedication and commitment to serving our community is deeply appreciated. Both officers bring valuable skills and enthusiasm to their roles, and we are confident they will help ensure the safety and well-being of Worcester's residents. Please join us in thanking and congratulating them on their new positions. 🐦

COMMUNITY DAY 2024 WHEELS OF WORCESTER

Community Day is back in 2024, promising a day filled with excitement and community spirit. Save the date for September 28th with a rain date of the 29th and get ready to join in the festivities!

On this special day, families can look forward to a variety of activities that cater to all ages. From entertaining games to vendors, there's something for everyone.



If you're a vendor and want to showcase your offerings, seize the opportunity to be part of this community celebration. Interested vendors can reach out to DSchreiber@worcestertwp.com for more information on how to secure a booth and contribute to the event's success.

Community Day goes beyond just fun and games; it's a collaborative effort that relies on the support of the community. We extend our gratitude to our community partners who play a crucial role in making this day possible. If you or your organization are interested in becoming a community partner, don't hesitate to reach out to DSchreiber@worcestertwp.com and be a part of the positive impact we aim to create together.

Mark your calendars, gather your family and friends, and join us on September 28th for a memorable Community Day. Let's celebrate unity, diversity, and the spirit of togetherness that makes our community truly special. See you there! 🐦

WORCESTER FIRE DEPARTMENT ANNUAL CHICKEN BBQ



Saturday, August 24th at 3:00 PM
\$20 Per Meal
Eat in or Takeout



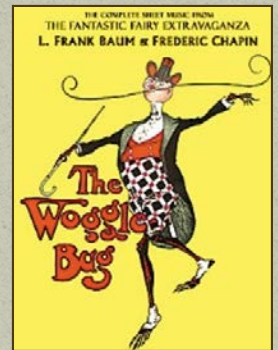
TICKETS ON SALE AT 10:00 AM

Cash, Venmo, Checks & Credit Cards Accepted



Montgomery County Rapid Transit Company "Wogglebug" Trolley

The trolley came to Worcester in 1907 and lasted until 1925. It was originally built to provide stable transportation and freight movement throughout the year. Worcester roads at the time were primarily dirt and became impassable during bad weather. The trolley not only provided regular transportation of people and goods but also supplied electricity along the track route. It also allowed students to attend the new Worcester High School built in 1912. In 1919, the trolley company connected Fairview Hall to the power system and electricity finally came to Worcester!



The trolley made stops at different stations in Worcester including Fairview, Water Street, Stump Hall, Center Point, Wentz's, and Cedars. The trolley was fondly known as the Wogglebug. The name comes from a character in the "Wizard of Oz," an insect who waddles along side to side which is the image the trolley gave as it gently swayed sideways on the tracks. If you want to learn more about the Wogglebug or Worcester History, please visit the Historical Society Museum at Center Point and see our Wogglebug trolley display.

CANDY WINNER

Congratulations to Amy Diesel, the lucky winner of the candy in the fishbowl! She correctly guessed the exact number of candy pieces, which was 127.

If you'd like to try your luck, feel free to stop by the municipal building between 7:00 AM and 4:30 PM, Monday to Friday, to take a guess of your own. The next contest will end July 26th. 🍬



TIPS ON WAYS TO CONTROL STORMWATER ON YOUR PROPERTY



Turn Around, Don't Drown

Some motorists approach road-closed signs and think, "I don't see anything dangerous, so I'll keep driving down the road." It's a decision that can cost lots of money, and lives.

Did you know...

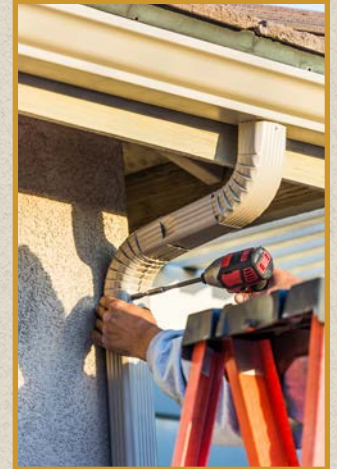
- six inches of water will knock the strongest person off their feet
- six inches of water can cause a car to lose traction
- twelve inches of water will float most cars

In Pennsylvania drivers who are caught disregarding road-closed signs are assessed two points on their driver's license and a fine up to \$250. This fine increases to \$500 if the vehicle gets stuck and requires emergency rescue services.

So before driving around a road-closed sign, think twice about the risks. It's just not worth it!

Here are some tips from the Penn State Extension to consider when you trying to control the stormwater on your property:

- **Downspout Disconnect/Redirect** - If your downspouts are directed onto a paved or concrete surface or are directly connected to the storm drain system, look for opportunities to redirect them to lawn and garden areas. Just be sure that all downspouts are directed away from foundations to avoid basement flooding.



- **Rain Barrels** - Rain barrels capture and hold water until it can be used or slowly released into planted areas. For rain barrels to be effective at controlling stormwater, it is important to have a plan for using the water before installing one.

- **Planting Trees** - Planting trees are a great way to reduce stormwater runoff. If you have a stream on your property, planting trees along the stream can be the best thing you do for water quality and the trees will help prevent the stream from eroding away your property. The more trees the better, but aim for a forest that is at least 35 ft.



wide. At the very least don't mow your lawn directly up to the edge of the streambank. Let the grass grow some roots!

- **Meadows** - If trees aren't an option on your property, adding other types of plants is a good substitute. Any areas where lawn can be replaced with ornamental grasses, flowers, and shrubs will have a positive impact on controlling stormwater on your property. Meadows, whether large or small, increase the ability of the land to absorb water. Meadows can be a great way to reduce the amount of time you spend mowing the grass and can be placed in the areas that are the most difficult to mow.

- **Rain Gardens** - One of the best options for managing stormwater on your property is to install a rain garden. A rain garden is a bowl-shaped garden that can capture and hold water until it is able to be absorbed into the soil.

- **Pervious Pavers** - Pervious pavers can look very similar to a traditional brick or stone patio, sidewalk, or driveway. The difference is that they are installed with a thick stone base that provides space for water to be stored until it soaks into the ground. They are great for converting hard surfaces that usually make a lot of stormwater, into a surface that absorbs, manages, and reduces stormwater runoff. 🐦

2024 ROAD IMPROVEMENT PROGRAM

This year, Worcester Township will continue implementation of its annual road improvement program. This program is designed to maximize the useful life of infrastructure through an aggressive maintenance plan and appropriately scheduled capital improvements. The program, which includes a maintenance plan and a capital plan, allows the Township to maintain more than fifty-five miles of roads in good condition.



The maintenance plan includes pothole repair, street sweeping, roadside brush trimming, roadside swale maintenance and patch milling.

The capital plan includes the replacement and installation of culverts and stormwater pipes, and the resurfacing and reconstruction of roads. On average, the Township resurfaces and/or reconstructs between three and five miles of roadways each year.

The number of roads treated depends on many factors, including the extent of repairs needed, the cost of materials, and the damage done during the winter months. As such, road projects are often subject to change.

Approved paving projects in 2024 include the repaving of:

- Ayershire Drive
- Conrad Way
- Dotts Way
- Drake Road
- Locust Drive
- Mann Road
- Nyce Way
- Schied Way
- Sunny Ayre Drive
- Warner Road
- Weigner Road
- Shearer Road

When the list of roads to be resurfaced is confirmed this information will be posted to the Township website. Motorists using the above-noted roads may experience delays during construction. We thank you for your understanding and patience as we work to improve our community's roadways. 🚧

NAVIGATING THE HEAT: Recognizing Heat Stroke and Heat Exhaustion

When facing heat exhaustion, it's a warning to cool down: find shade, hydrate with water or sports drinks, and rest. Remove excess clothing and cool off with water or fans. However, with heat stroke, there's no time to waste – it's an immediate medical emergency. Move to a cooler area, shed excess clothing, cool your skin with water or ice packs, and seek medical help promptly.

Whether it's heat stroke or heat exhaustion, take heed: listen to your body, act swiftly, and stay safe under the summer sun. By doing so, you'll conquer the heat and enjoy the sunshine with confidence. 🌞

Heat Exhaustion	Heat Stroke
<p>ACT FAST</p> <ul style="list-style-type: none"> • Move to a cooler area • Loosen clothing • Sip cool water • Seek medical help if symptoms don't improve 	<p>ACT FAST</p> <p>CALL 911</p> <ul style="list-style-type: none"> • Move person to a cooler area • Loosen clothing and remove extra layers • Cool with water or ice
<p>Dizziness</p> <p>Thirst</p> <p>Heavy Sweating</p> <p>Nausea</p> <p>Weakness</p>	<p>Confusion</p> <p>Dizziness</p> <p>Becomes Unconscious</p>
<p><i>Heat exhaustion can lead to heat stroke.</i></p> <p><i>Heat stroke can cause death or permanent disability if emergency treatment is not given.</i></p>	
<p>Stay Cool, Stay Hydrated, Stay Informed!</p>	



Recycling Leaf & Yard Regulations

In 2021, the Worcester Township Board of Supervisors adopted Ordinance 2021-286, which enacted recycling requirements, specifically leaf and yard waste, in order to make sure the Township is fully compliance with recycling requirements as mandated by Pennsylvania Department of Environmental Protection (DEP) for municipalities with populations over 10,000.

Your trash hauler is required to have a monthly curbside collection of leaf and yard waste. The leaf waste should be bagged in biodegradable bags in order to be picked up. Some haulers may accept branches and other yard waste items. The Township has placed the information received from each of the trash haulers that service our community and the schedules for the monthly curbside collection on our website.

Another way for residents to dispose of yard waste is to simply drop it off at the compost site in Nike Park. The compost site is open on Wednesday and Saturday, 10am to 2pm, excluding holiday weekends.

For more information on the recycling requirements and information for each of the haulers that service our community, please visit our recycling page on our website at www.worcestertwp.com.

HOME COOKIN' AT MEADOWOOD

By Susan Elko, Resident at Meadowood Community

Susan Elko moved to Meadowood from West Chester with her husband Alan 2 ½ years ago. They have settled in and are enjoying life in the Worcester area. Susan grew up in North Wales, so this is a bit of a homecoming for her. After college at Bucknell she worked in the North Penn School District and was an active member of Lansdale AAUW while raising two sons in Towamencin. She then accepted an exciting career opportunity at the Merck Institute for Science Education and moved to Princeton.



Coming back to Worcester holds family history for Susan who has recently traced an ancestor who was one of the original Schwenkfelder settlers in this area as well as a great grandfather who farmed land on Heebner Road growing tobacco then moved into North Wales and became a cigar maker. Susan's father's store, Weingartner Sport Shop, was well known in the local area for several decades.

The Kahlua Cake recipe offered here is a favorite of the Elko family and friends. She hopes you enjoy its rich dense, texture and moist, flavorful taste. 🍪

Kahlua Cake

Cake:

1 Devil's food cake mix
1 4 ½ oz. instant chocolate pudding
4 eggs, room temperature
¾ cup strong coffee
½ cup oil
½ cup Kahlua
½ cup Creme de Cacao

Glaze:

Whisk together
2 T. Kahlua
2 T. Creme de Cacao
2 T. coffee
1 cup confectioner's sugar (sift if lumpy)



- Beat all ingredients with electric mixer
- Pour in greased bundt pan
- Bake in preheated 350 degree oven for 40-45 minutes (do not overbake)
- Cool for 20-30 minutes
- Remove from pan while warm, pierce top of cake with fork, cover with glaze



Clean Water Begins at Home

Only Rain Down the Drain

Check your car for leaks and recycle used motor oil. Never pour it on the ground or into a storm drain. Clean-up using cat litter to absorb leaks and spills and then place in your regular trash for proper disposal.

Have your septic tank pumped and system inspected regularly.

Minimize pesticides; learn about Integrated Pest Management (IPM). For more information, visit EPA's website at: epa.gov/ssafepestcontrol/integrated-pest-management-ipm-principles

Compost yard waste or place in your yard waste bin. Reuse the compost in gardens and flower beds.

Take your car to a car wash or park on the grass to avoid cleaners from entering the storm drains. Use biodegradable soap, if soap is necessary.

Direct drain spouts into rain gardens or install a rain barrel to prevent some runoff and to reduce the need for irrigation water from the tap.

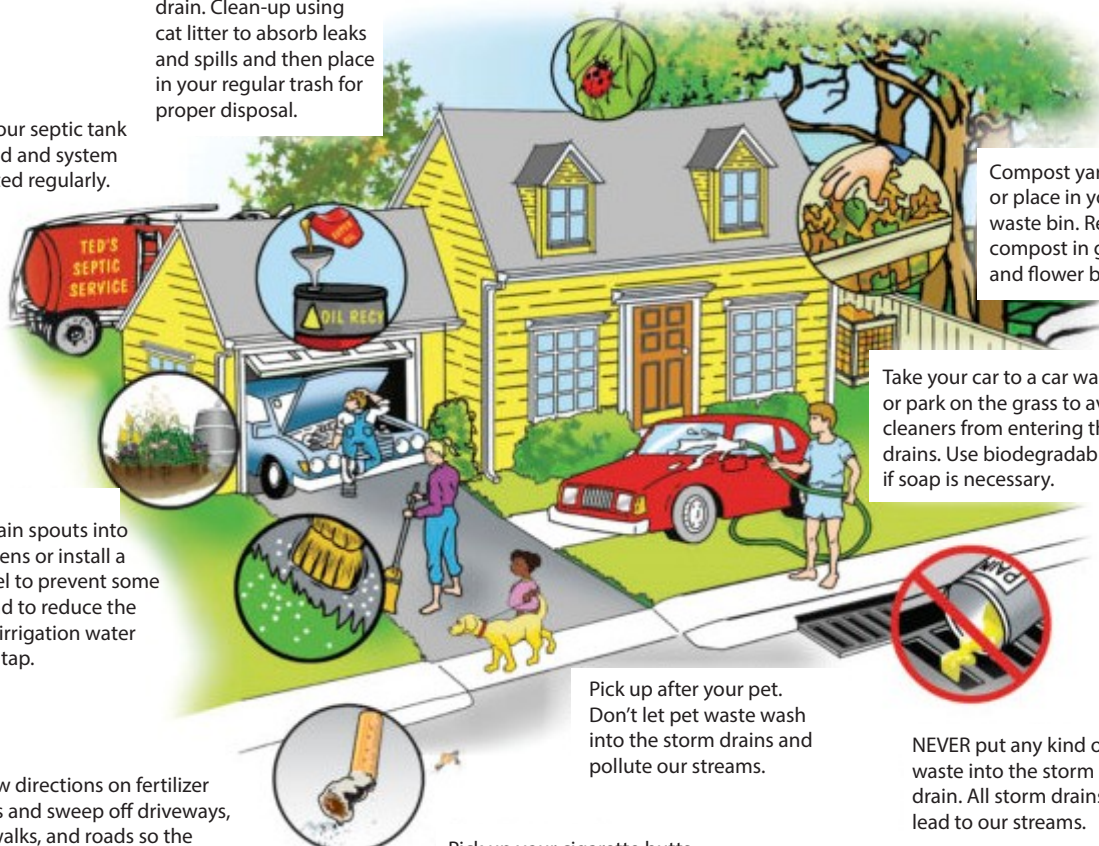
Follow directions on fertilizer labels and sweep off driveways, sidewalks, and roads so the chemicals won't get into the storm drains and streams.

Pick up after your pet. Don't let pet waste wash into the storm drains and pollute our streams.

Pick up your cigarette butts. They are full of chemicals and harmful to our waters and animals.

NEVER put any kind of waste into the storm drain. All storm drains lead to our streams.

Everything Ends Up in Our Streams



WORCESTER



TOWNSHIP

At the Center Point

of Montgomery County

1721 VALLEY FORGE ROAD
P.O. BOX 767
WORCESTER, PA 19490

Presorted
Standard Mail
U.S. Postage PAID
Permit #50
West Chester, PA

HOURS: 7:00 AM-4:30 PM
PHONE: (610) 584-1410
FAX: (610) 584-8901
WORCESTERTWP.COM

BOARD OF SUPERVISORS
Richard DeLello, Chair
Lou Betz, Vice Chair
Stephen Quigley, Member

Get Connected and Stay Informed!

There are many ways to get connected and stay informed about the happenings around Worcester Township!

- **Our award-winning newsletter** (*you are reading now!*) is mailed to every household in the Township four times a year.
- **Our website, worcestertwp.com**, provides the most up-to-date information on public meetings, proposed land developments, community events, road projects, and much more! Check out Top Topics (*at the top of home page*) for in-depth information on key projects throughout the Township.
- **Weekly e-mail updates.** For weekly updates sent directly to your inbox, sign-up for the Peek at the Week! *To enroll simply click the link at the top of our home page.*

As you can see, there is so many ways to get connected and stay informed depending on what works for you! If you have any questions about Township communications please contact the Township Manager at **(610) 584-1410**, or by email at **manager@worcestertwp.com**.

