



Erected Into a Township in 1733
At the Center of Montgomery County

Nike Park
1170 Trooper Road, Worcester Township

Nike Park is a quiet, natural open space in Worcester Township, located at 1170 Trooper Road. Spanning approximately 10 acres, the park is a blend of passive recreation, environmental services, and historical significance.

Historical Background

The site was originally developed by the United States Army during the Cold War era as part of the Nike Missile Defense System, a nationwide anti-aircraft program established in the 1950s. Known as PH-82, the Worcester site was one of several launch and control locations built to defend the Philadelphia region from potential Soviet bomber attacks.

After the Nike program was decommissioned in the 1970s, the property was transferred to local government ownership. Today, while no military structures remain active, the site's flat open layout and strategic positioning reflect its past use as a radar and missile control station. The Township retained the land and gradually transitioned it into a public open space.

Mowed Walking Trail

A mowed grass loop trail runs through the property, offering a peaceful path for walking, jogging, or enjoying nature. The trail passes through meadows and wooded sections, and is maintained seasonally.

Composting Facility

Nike Park also hosts Worcester Township's leaf and yard waste composting site, which is open to residents during designated hours for the drop-off of organic materials such as leaves, brush, and small branches. This facility supports the Township's broader recycling and environmental sustainability goals. Use is restricted to residents only; commercial dumping is prohibited.

Open Space and Natural Use

Nike Park does not include athletic fields, playgrounds, or picnic structures. Instead, the site offers open, natural space suitable for low-impact use like dog walking, birdwatching, and environmental education.

Access and Parking

A gravel driveway off Trooper Road leads to a small parking area, which provides access to both the walking trail and the composting facility. The park is open from dawn to dusk.

Preserving a Unique Legacy

By maintaining Nike Park as a natural area, Worcester Township preserves a unique piece of



1721 S. Valley Forge Rd
Worcester, PA 19490



www.worcestertwp.com



610-584-1410



610-584-8901

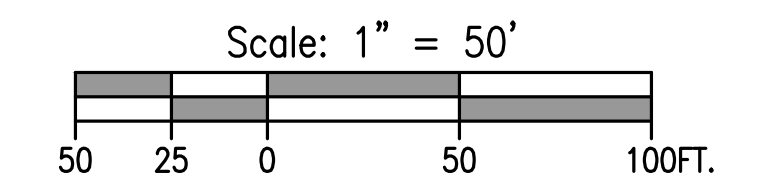
American history while providing residents with a quiet, functional open space. Interpretive signage or further recognition of the site's military past may be considered as part of future park planning.

For composting hours, regulations, or general park information, please visit www.worcestertwp.com or contact the Township office at 610-584-1410.





.

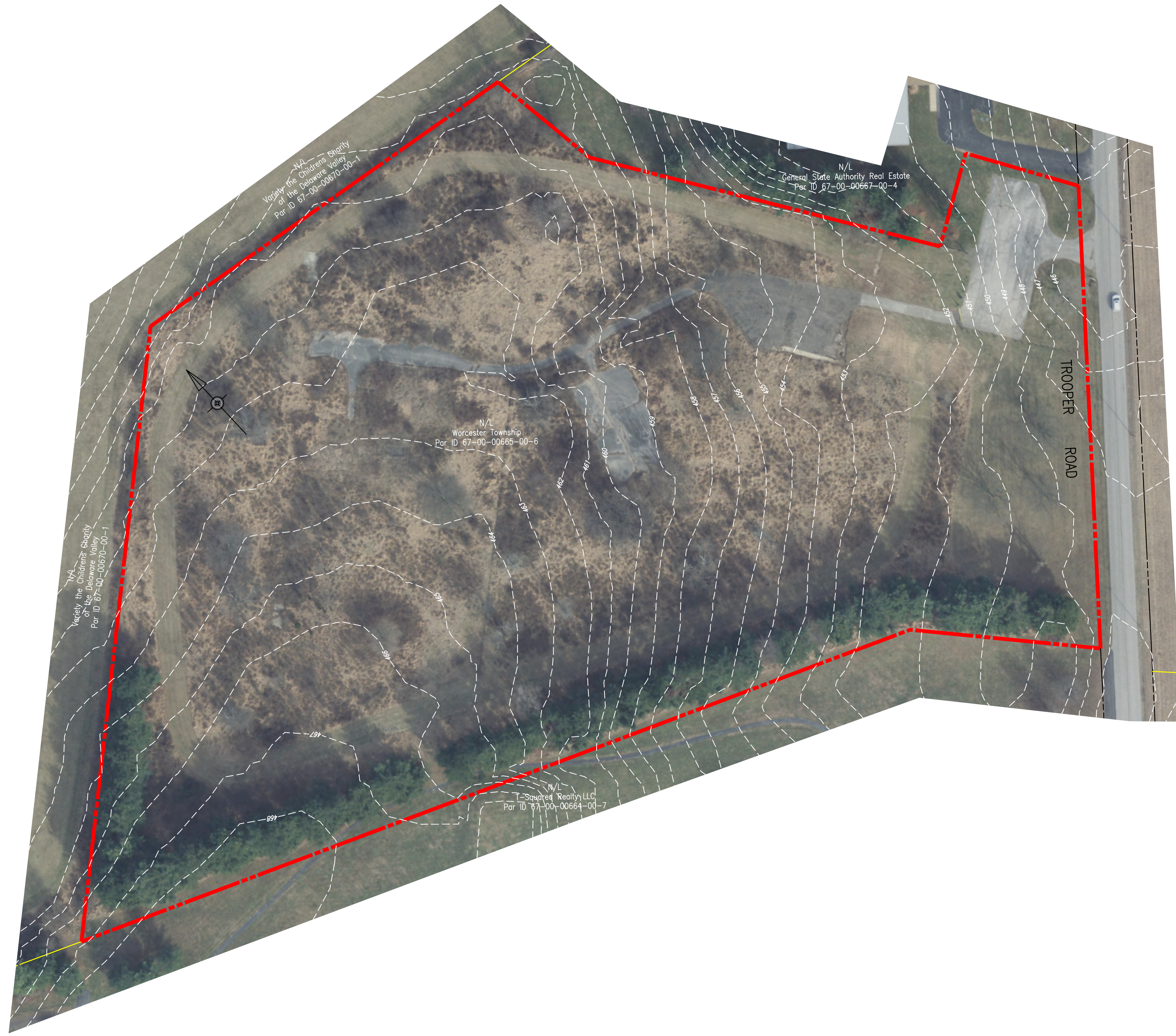
1170 TROOPER ROAD COMPOST, WALKING TRAIL

WORCESTER TOWNSHIP, MONTGOMERY COUNTY, PA



LEGEND

-  LEGAL RIGHT-OF-WAY LINE
-  PROPERTY LINE
-  EXISTING CONTOUR
-  COMPOST, WALKING TRAIL BOUNDARY



1. Aerial Imagery: Worchester Township 2020-2100 VARIOUS AND OPEN SPACE PLANS/2020